



ICC Team
 Contract "B" Hub Office
 11710 Beltsville Drive
 Beltsville, MD 20705

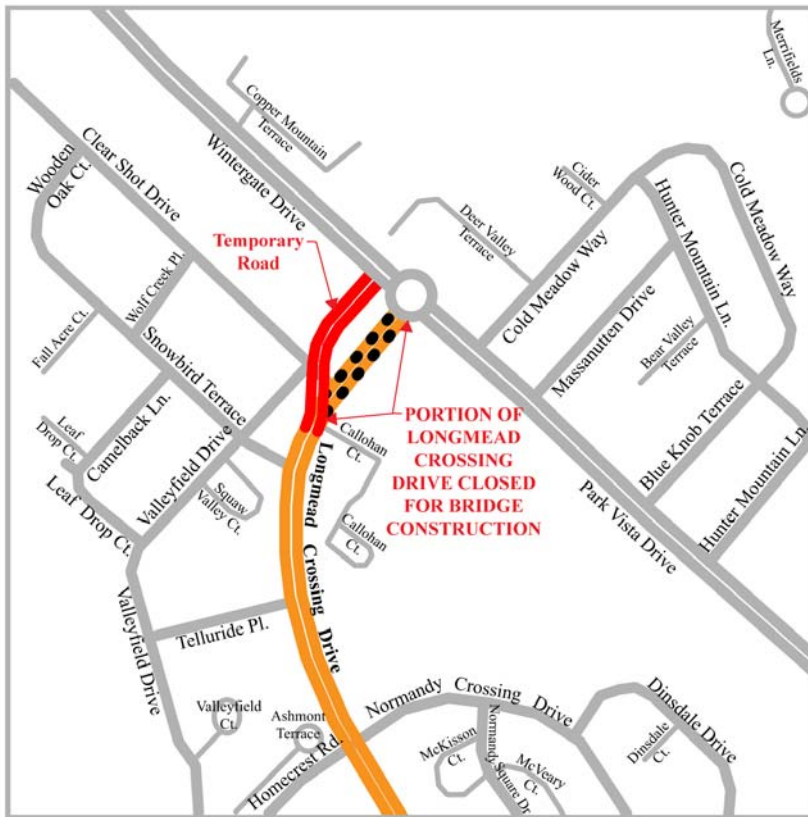


PUBLIC NOTICE

LONGMEAD CROSSING DRIVE CONSTRUCTION

As State Highway Administration's ICC team begins work on the Longmead Crossing Drive bridge over the ICC our first major task is constructing the Longmead Crossing Drive temporary road including a temporary bridge. The following activities will begin on or about August 24, 2009:

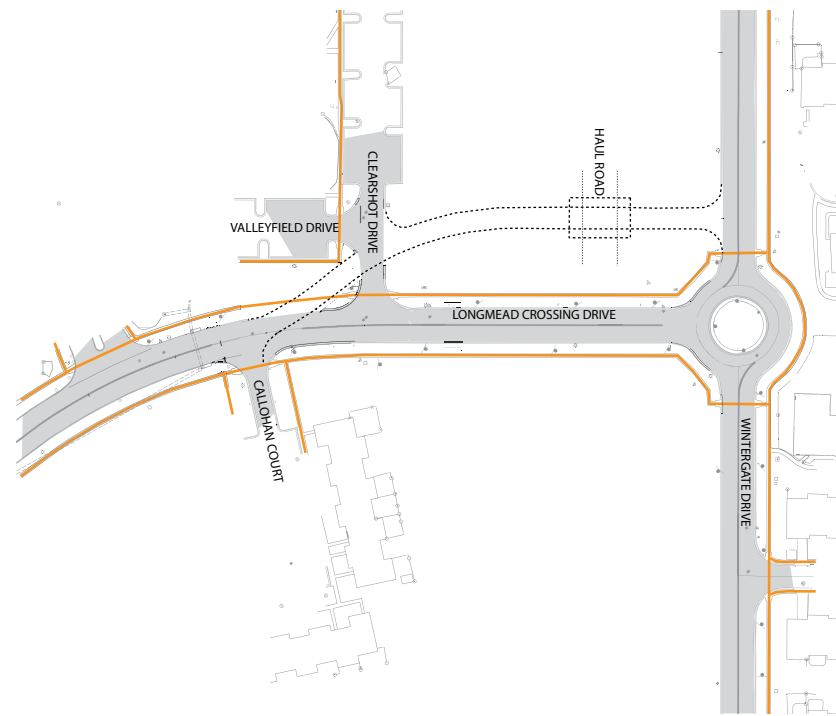
- Closure of parking lot access at to Valleyfield Drive at Clear Shot Drive;
- Access to Clear Shot Drive will remain open throughout construction;



- Access to Valleyfield Drive at Snowbird Terrace will remain open throughout construction;
- Sidewalk closure on the west side of Longmead Crossing Drive between Clear Shot Drive and Wintergate Drive and adding temporary sidewalk connections for pedestrian access on the west side of Longmead Crossing Drive at Valleyfield Drive;
- Access to Longmead Crossing Drive from the traffic circle will be closed during the temporary condition, access to the temporary road will originate at Wintergate Drive;
- Re-routing traffic onto the temporary road and closing existing Longmead Crossing Drive until summer 2010 to allow for construction of a permanent bridge over the ICC.

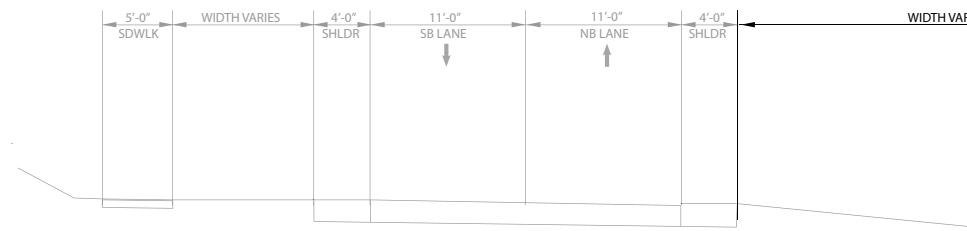
If you have any questions or concerns regarding construction, please contact Ms. Cathy Smith, ICC Contract B Community Liaison, at the Office of the Intercounty Connector at 301-586-9243 or by email: catsmith@iccproject.com

If you would like to find out more about the ICC, please visit the project website at www.iccproject.com. Thank you for your patience as we continue with construction of this important project.

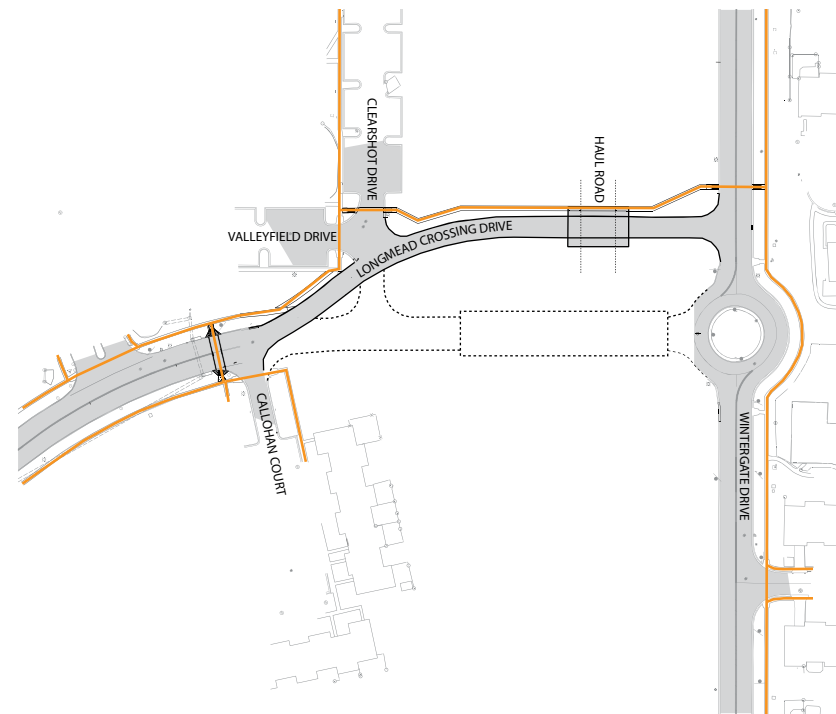
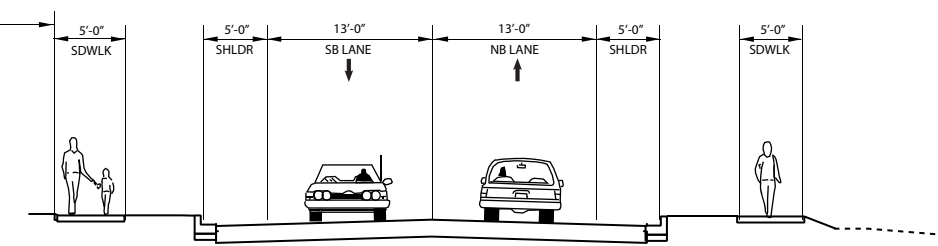


ORIGINAL CONDITION

TEMPORARY CONDITION UNDER CONSTRUCTION

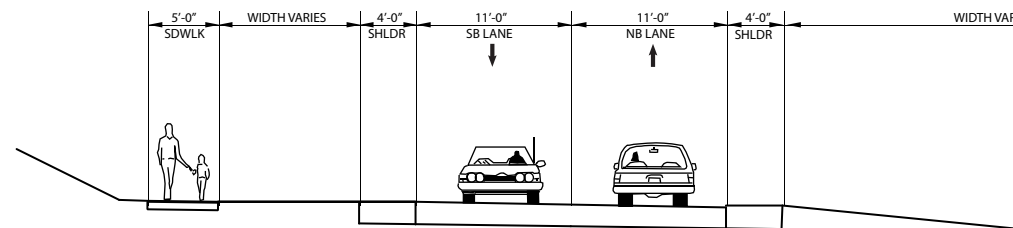


ORIGINAL CONDITION FACING WINTERGATE DRIVE

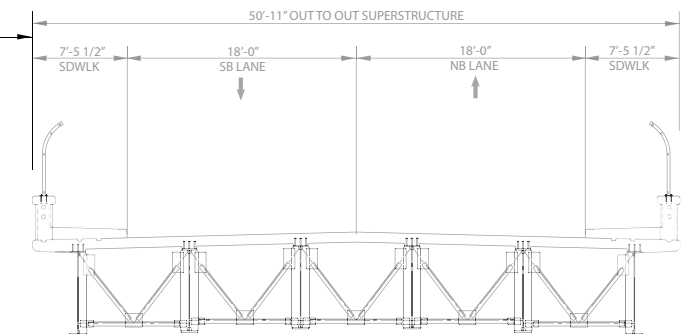


TEMPORARY CONDITION

TEMPORARY CONDITION FACING WINTERGATE DRIVE



ULTIMATE CONDITION UNDER CONSTRUCTION



LONGMEAD CROSSING DRIVE ORIGINAL AND TEMPORARY CONDITIONS



Contract B

DRAFT

